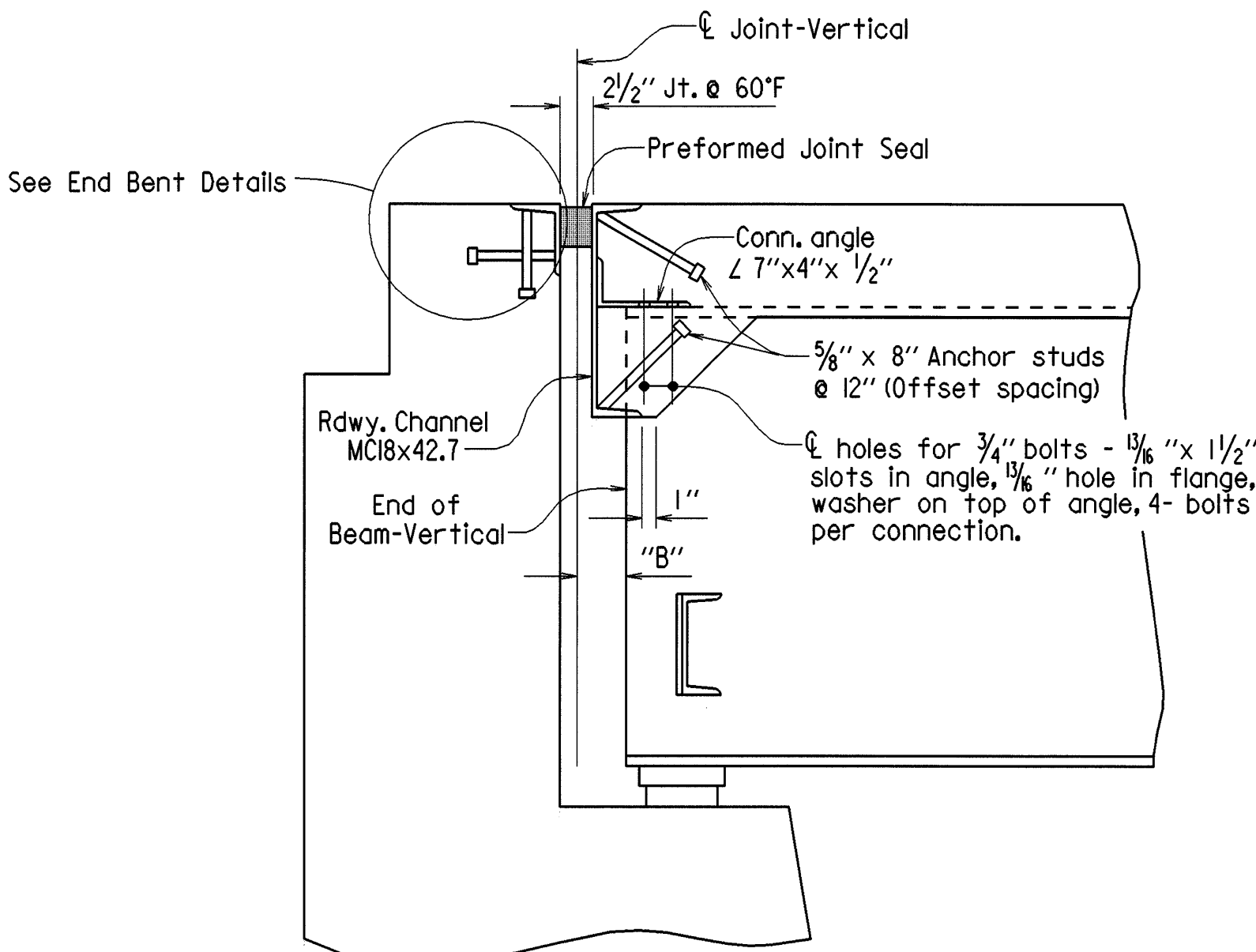


| DATE REVISED | DATE FILMED | DATE REVISED | DATE FILMED | FED. ROAD DIST. NO. | STATE | FED. AID PROJ. NO. | SHEET NO. | TOTAL SHEETS |
|------------------------|-------------|--------------|-------------|---------------------|-------|--------------------|-----------|--------------|
| | | | | 6 | ARK. | | | |
| | | | | JOB NO. | | 110387 | 44 | 96 |
| 06978 - JOINTS - 46124 | | | | | | | | |



DETAILS OF JOINTS AT END BENTS
No Scale

| TABLE FOR WELD | | |
|---|---------------------------------------|-------------------------------|
| Material Thickness of Thicker Part Joined (Inches) | Minimum Size of Fillet Weld (Inches) | Single Pass Weld Must Be Used |
| To 3/4" inclusive | 1/4" | |
| Over 3/4" | 5/16" | |

NOTE: When a fillet weld size, as shown on the plans, is larger than the minimum, the first pass shall be that specified for minimum size of fillet weld.

PREFORMED JOINT SEAL DATA

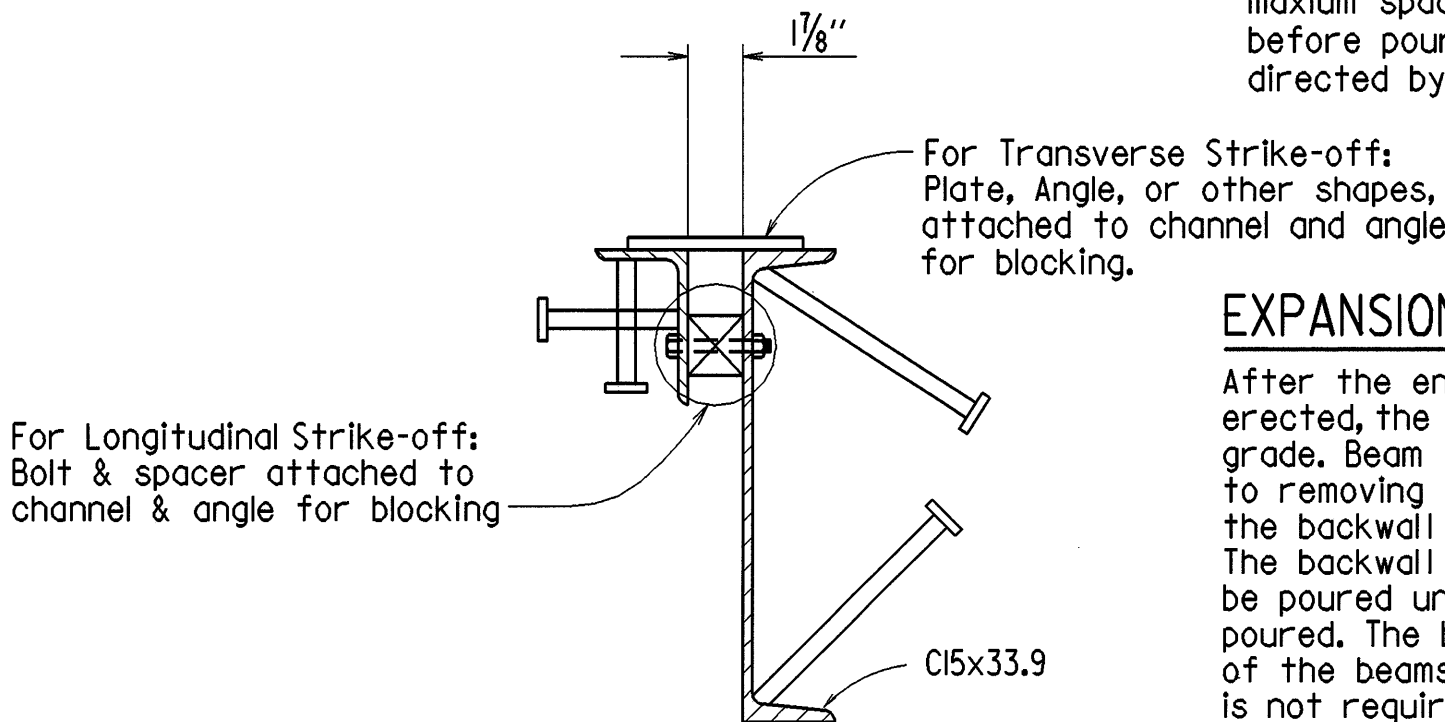
| Joint width perpendicular to Joint @ 60°F * | "B" Perpendicular To Joint | "C" Uncompressed Seal width | "W" Width between plates | Bumper Plate Size |
|---|----------------------------|-----------------------------|--------------------------|-------------------|
| 2 1/2" | 2 1/2" ± | 4" | 3/4" | 1" x 1/8" |
| | | | | |
| | | | | |
| | | | | |

* Installation is limited to 40°F, min. and 80°F, max. Dimension measured perpendicular to Joint

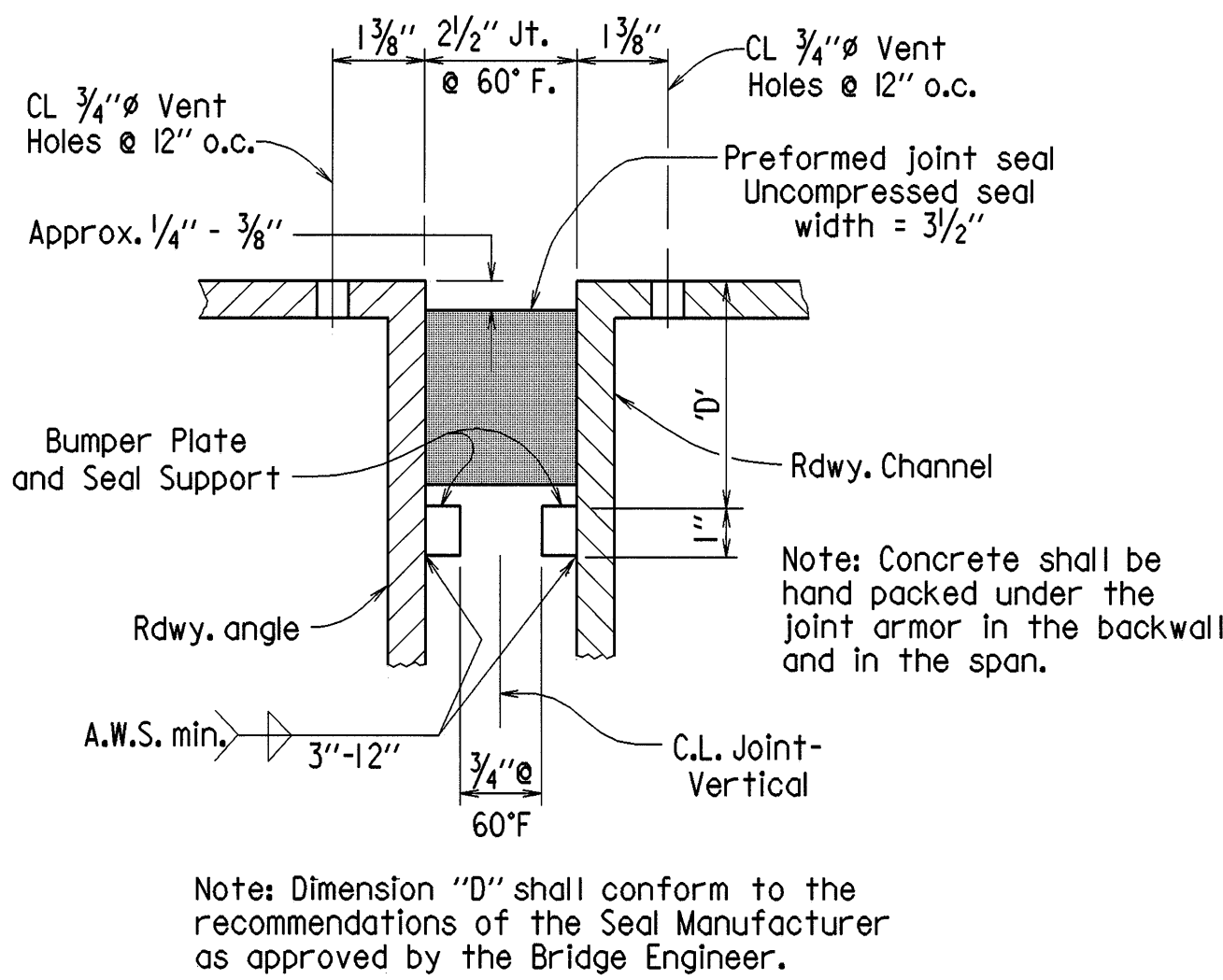
The temperature used to set the joint opening shall be the approximate average air temperature during the 24 hour period immediately before the bolts are tightened. The Engineer shall establish the temperature. Interpolation of the table may be necessary.

| Joint Opening | Temperature | | |
|---------------|-------------|--------|--------|
| | 40° | 60° | 80° |
| 2 1/2" | 2 3/4" | 2 1/2" | 2 1/4" |
| | | | |

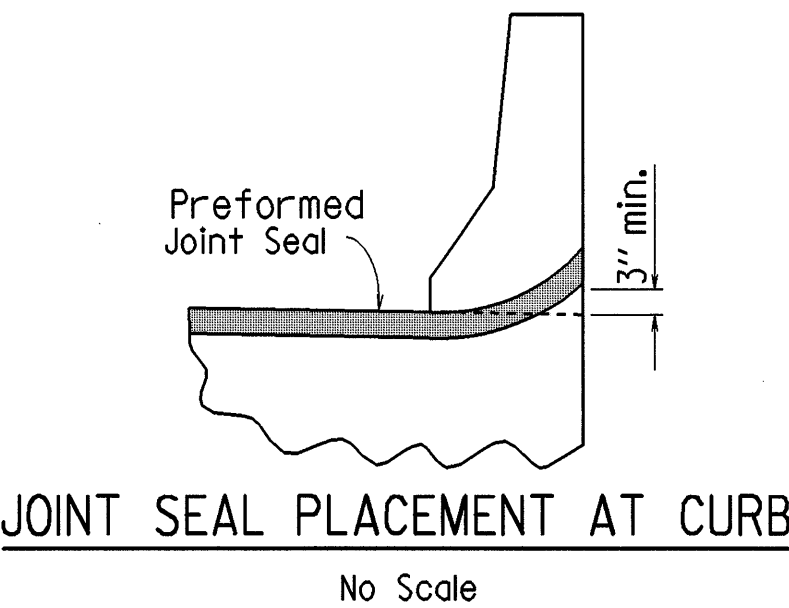
Note: Each expansion joint device shall be blocked in the Shop by the Fabricator to 2 1/2", and the blocking details shall be shown on the Shop Drawings. The blocking shall not be removed until the Slab on one side is complete. Blocking shall be placed within 2 feet of each end of the device and with a maximum spacing of 8 feet. Removal shall be just before pouring the second side of the joint, as directed by the Engineer.



DETAILS FOR BLOCKING EXPANSION
DEVICE AT END BENTS
No Scale



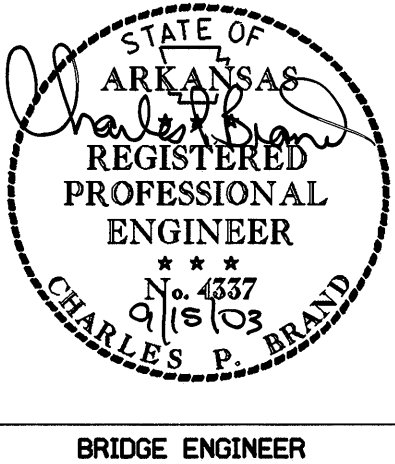
DETAIL OF PREFORMED JOINT SEAL & SUPPORT
No Scale
Note: The Seal shall be in one piece (without splices) for the full length of the Joint, except that lengths 55 feet and longer may have a factory made splice. Splices, when required, shall be shown on the Shop Drawings and shall be placed near the high ends of the Roadway. Separation of the Splice during installation shall be cause for rejection of the Seal.



JOINT SEAL PLACEMENT AT CURB
No Scale

EXPANSION DEVICE INSTALLATION

After the end bent backwall forms are in place and all the beams are erected, the blocked expansion device shall be installed and adjusted for grade. Beam connection bolts shall be installed loosely. Immediately prior to removing the blocking, the end bent angle shall be firmly secured to the backwall forms and the connection bolts on the beams tightened. The backwall shown above the required construction joint shall not be poured until the deck concrete for Pour (1) on the end span has been poured. The blocking shall then be removed to allow for end rotation of the beams while the concrete deck is poured. A joint opening adjustment is not required for end rotation of the beams caused by the weight of the slab and parapets.



DETAILS OF JOINTS
WALNUT LAKE
ROUTE SEC.
ARKANSAS STATE HIGHWAY COMMISSION
LITTLE ROCK, ARK.
DRAWN BY: KDH DATE: 3-25-03 FILENAME: BI10387.JTI
CHECKED BY: GYA DATE: 7-22-03 SCALE: AS NOTED
DESIGNED BY: MHA DATE: March 03
BRIDGE NO. 06978 DRAWING NO. 46124